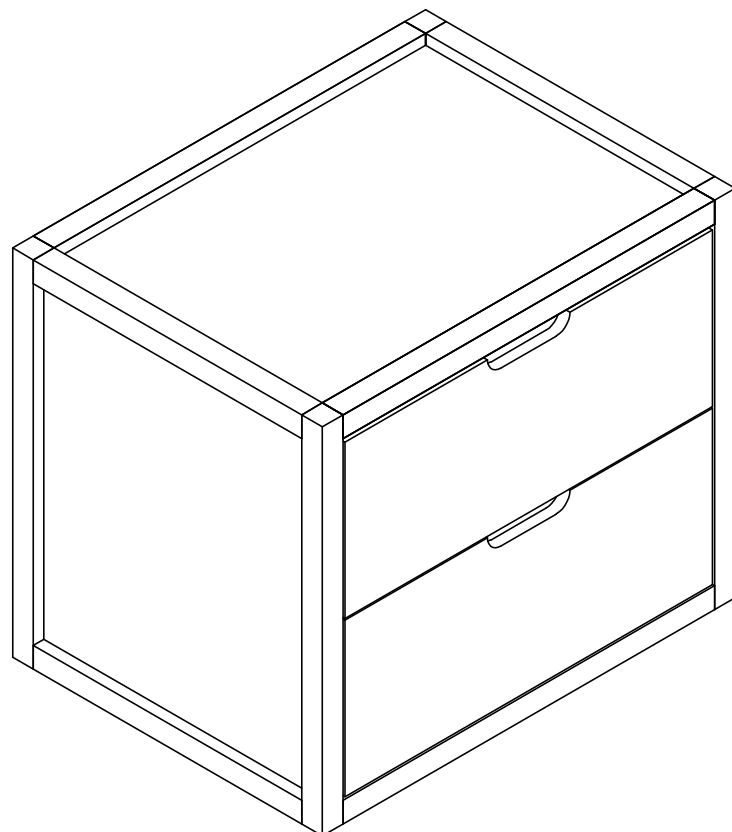
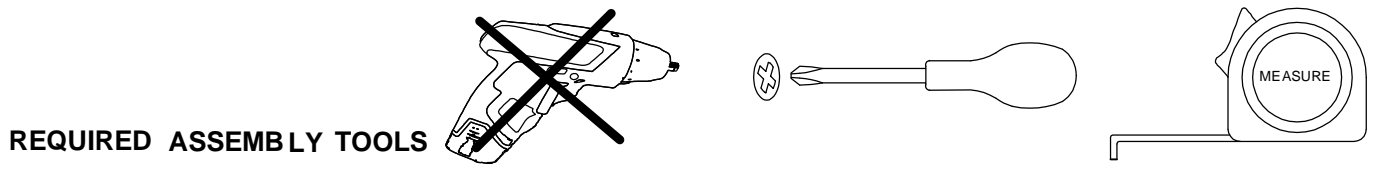
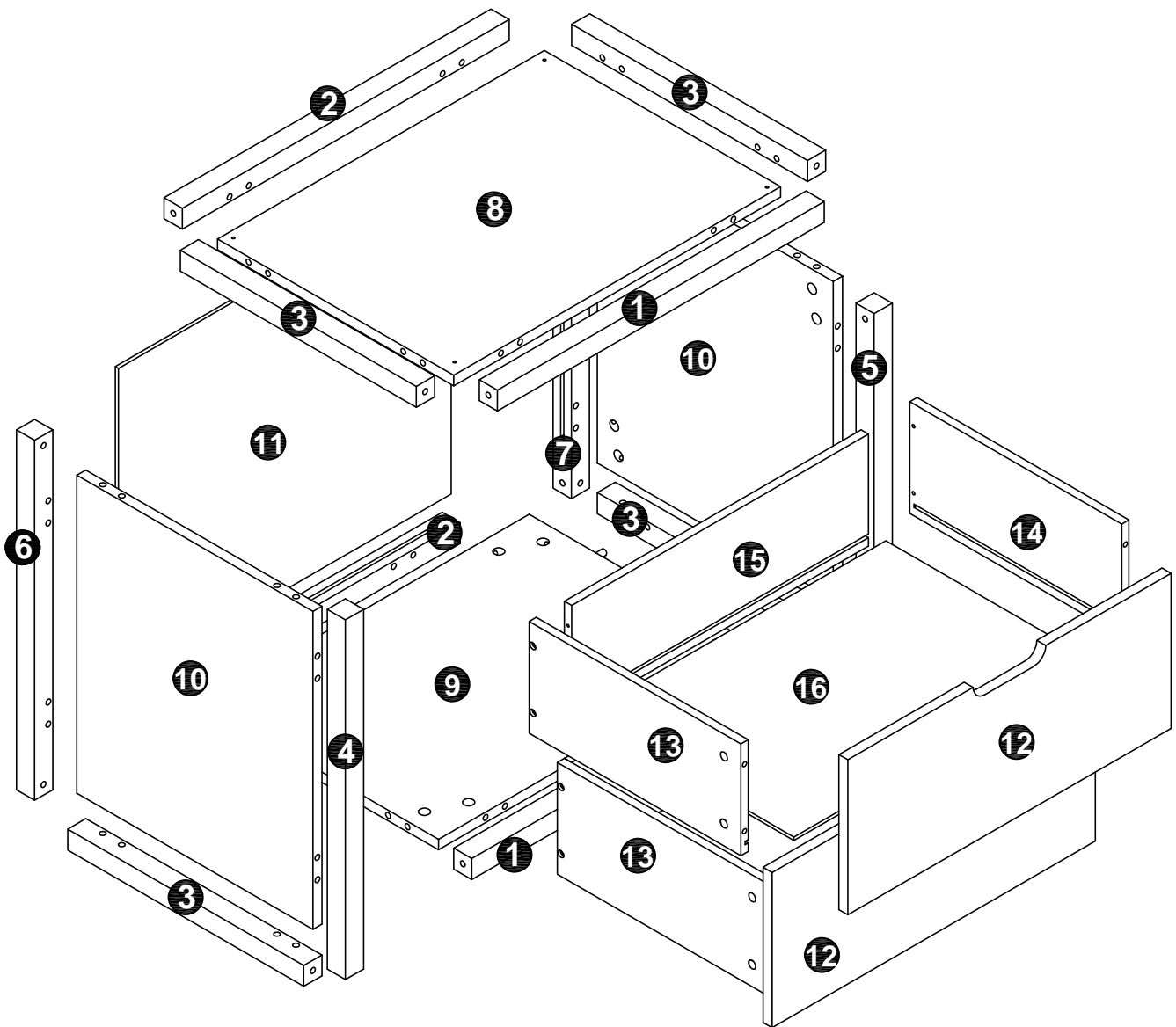


Small drawer module Lia



Small drawer module Lia

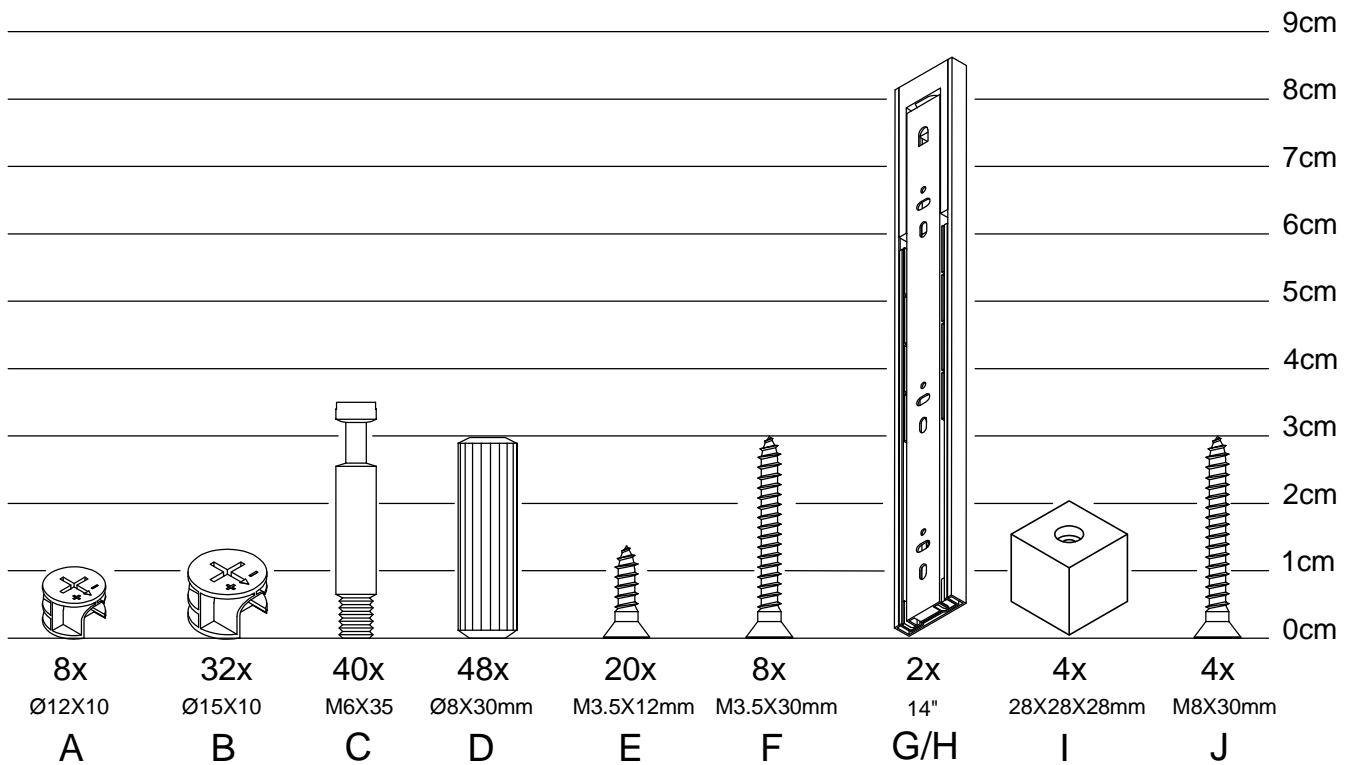


Small drawer module Lia

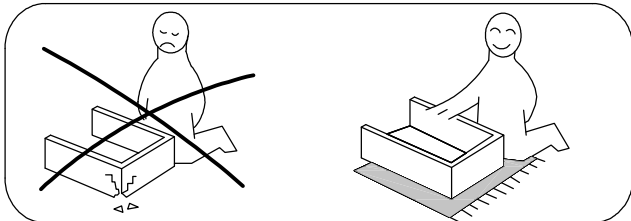
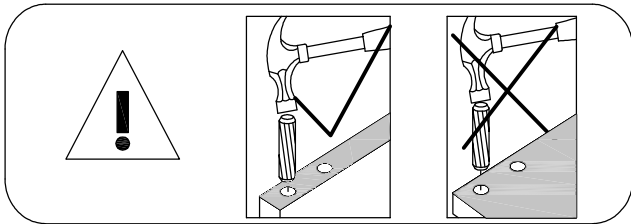
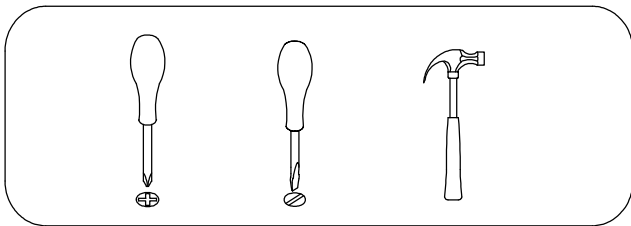
NO.	PARTS LIST	QTY	NO.	PARTS LIST	QTY
①	Front frame	2	⑨	Bottom panel	1
②	Back frame	2	⑩	Side panel	2
③	Side frame	4	⑪	Back panel	1
④	Left front frame	1	⑫	Drawer front panel	2
⑤	Right front frame	1	⑬	Drawer left panel	2
⑥	Left back frame	1	⑭	Drawer right panel	2
⑦	Right back frame	1	⑮	Drawer bottom panel	2
⑧	Face panel	1	⑯	Drawer bottom tray	2

Small drawer module Lia

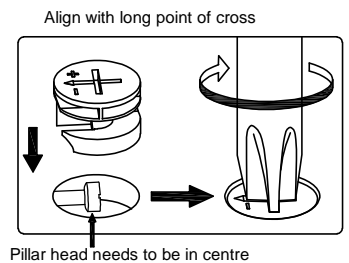
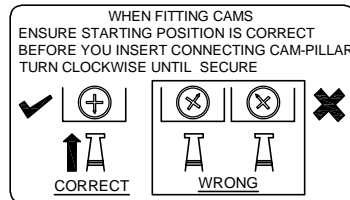
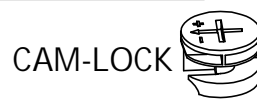
HARDWARE LIST



Small drawer module Lia

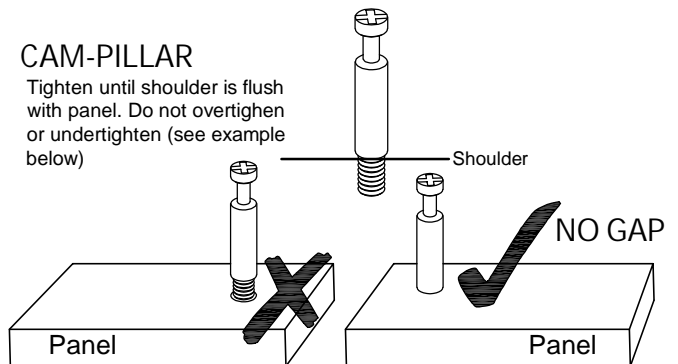


TIPS FOR FITTING CAM-LOCKS AND CAM-PILLARS



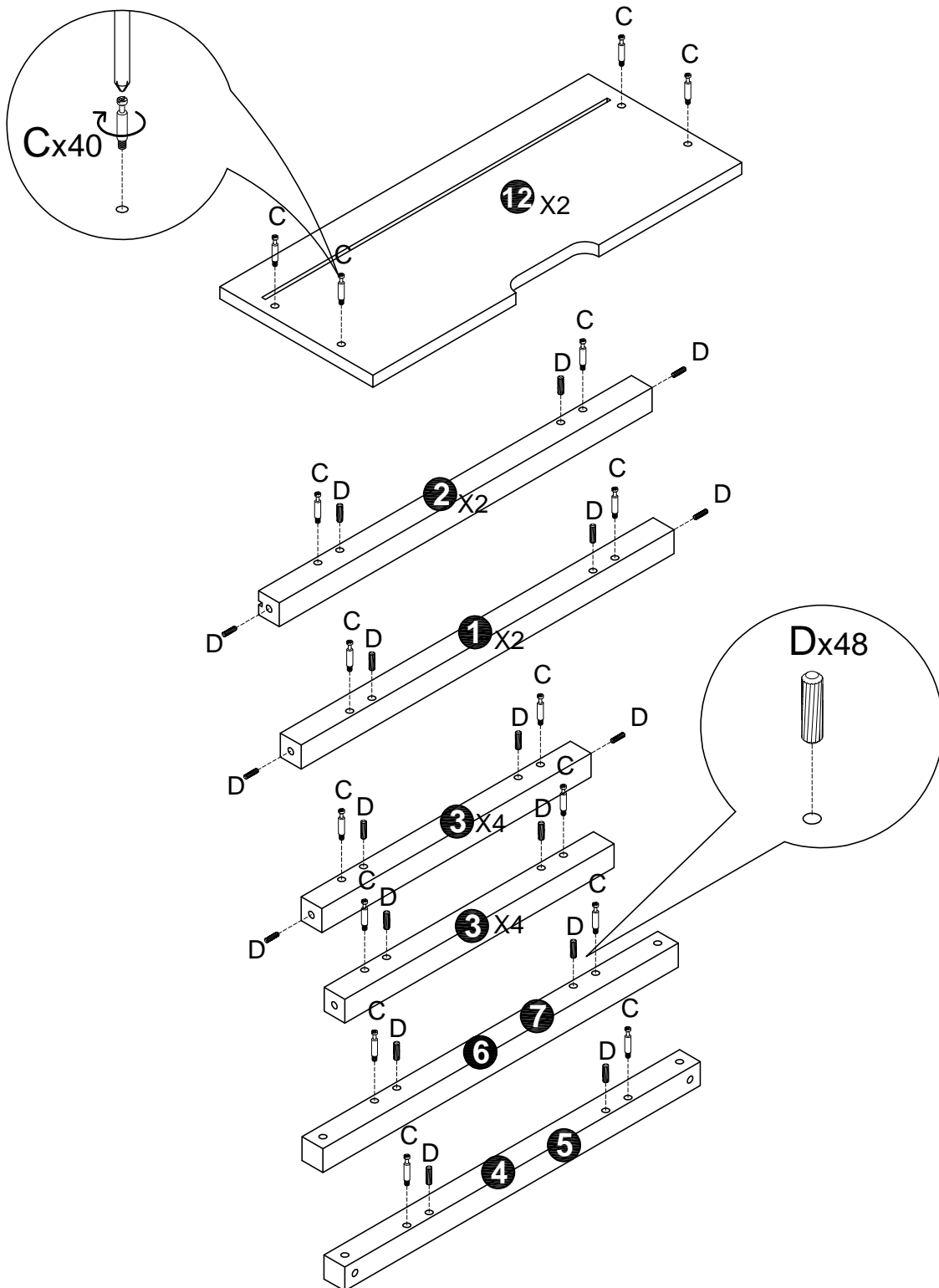
CAM-PILLAR

Tighten until shoulder is flush with panel. Do not overtighten or undertighten (see example below)



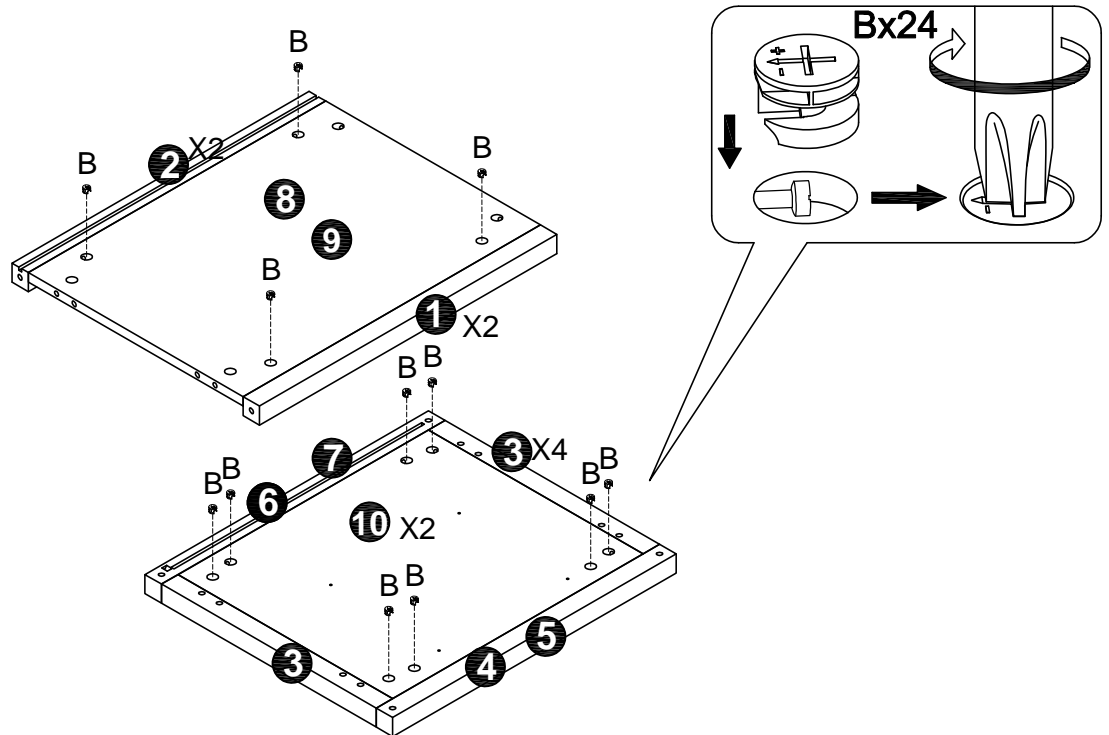
Small drawer module Lia

STEP 1

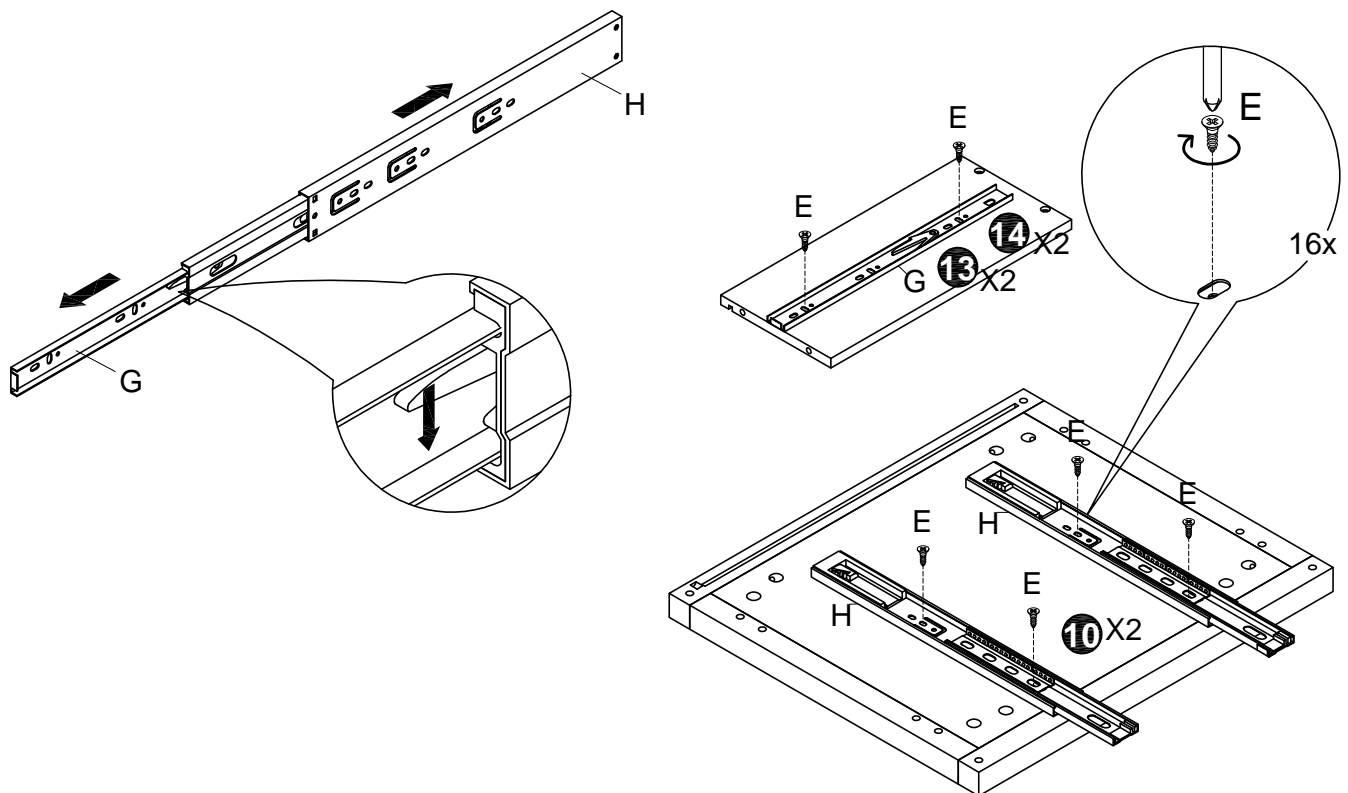


Small drawer module Lia

STEP 2

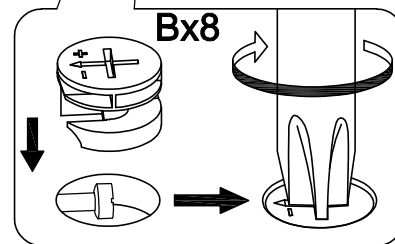
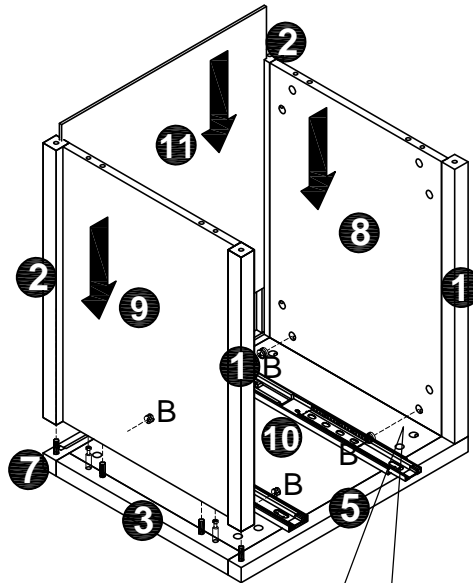


STEP 3

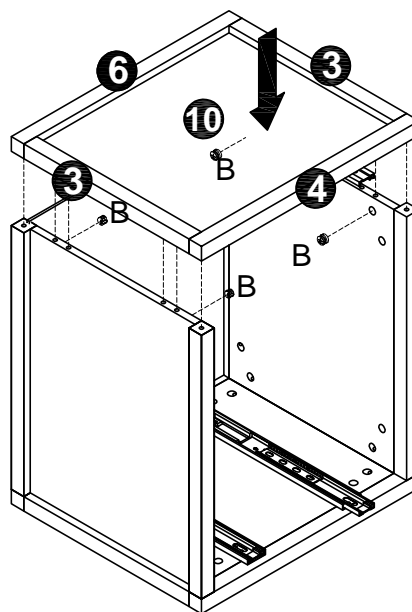


Small drawer module Lia

STEP 4

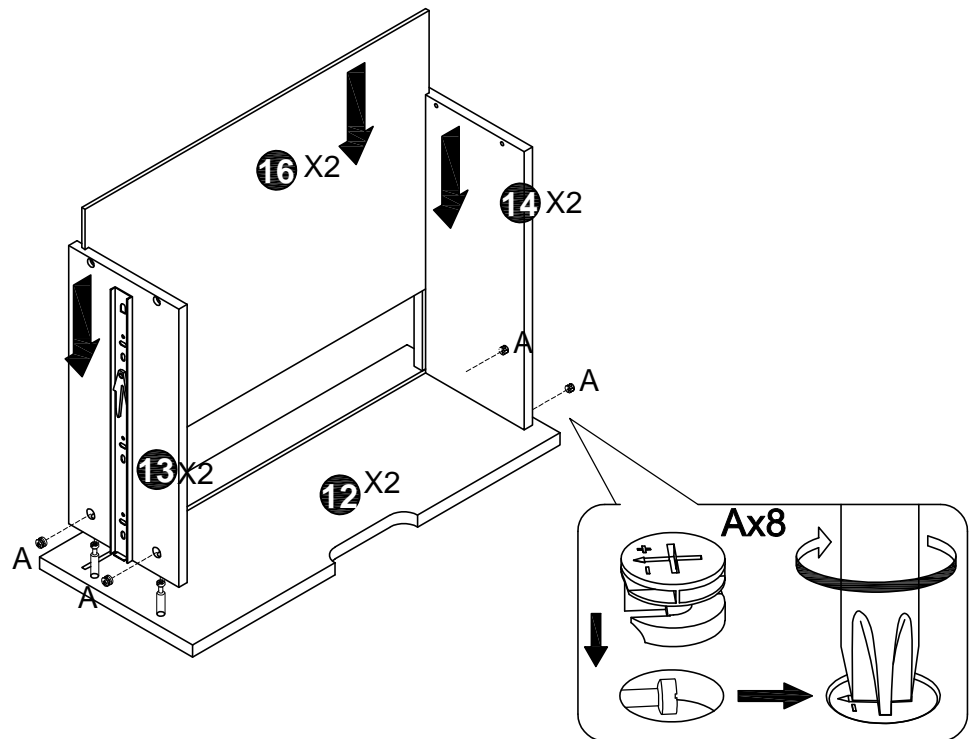


STEP 5

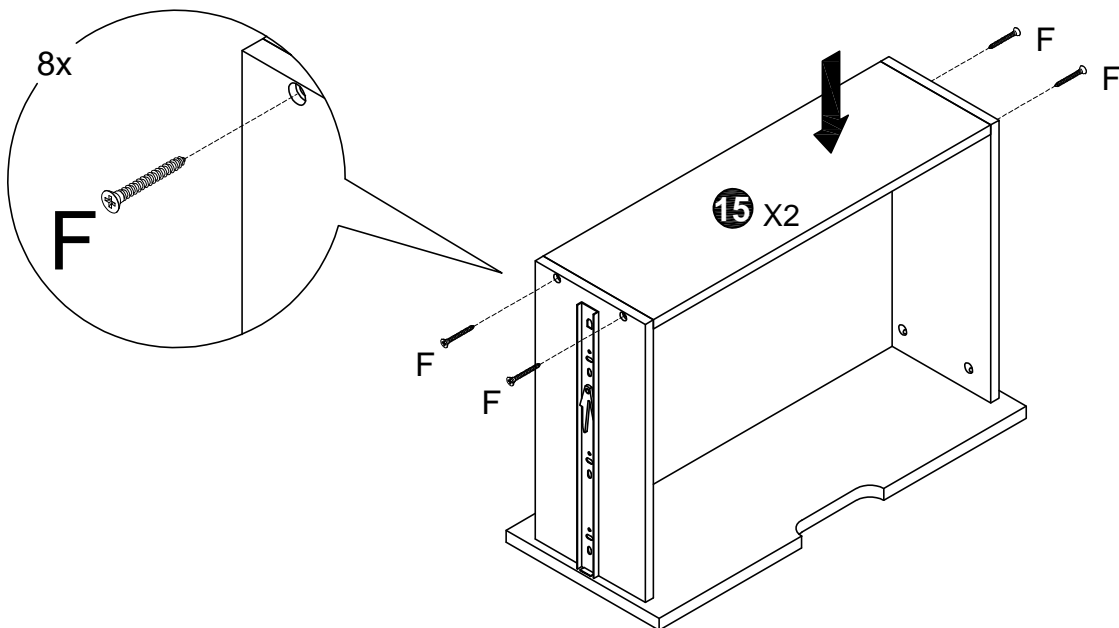


Small drawer module Lia

STEP 6

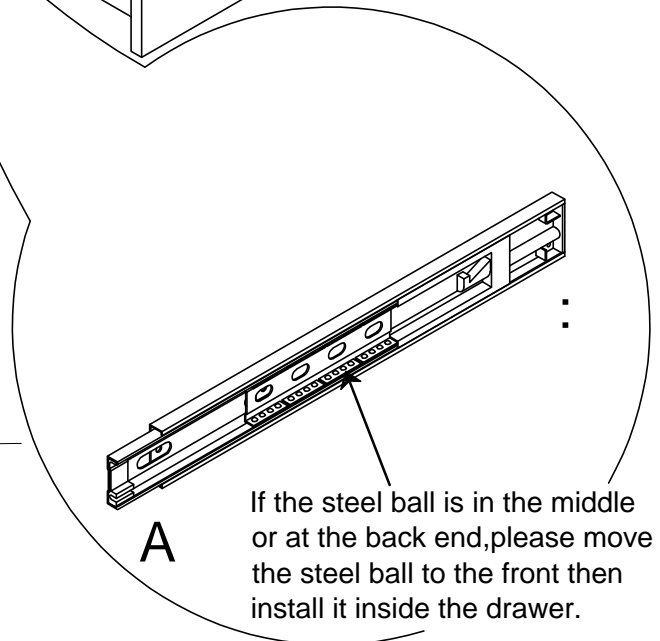
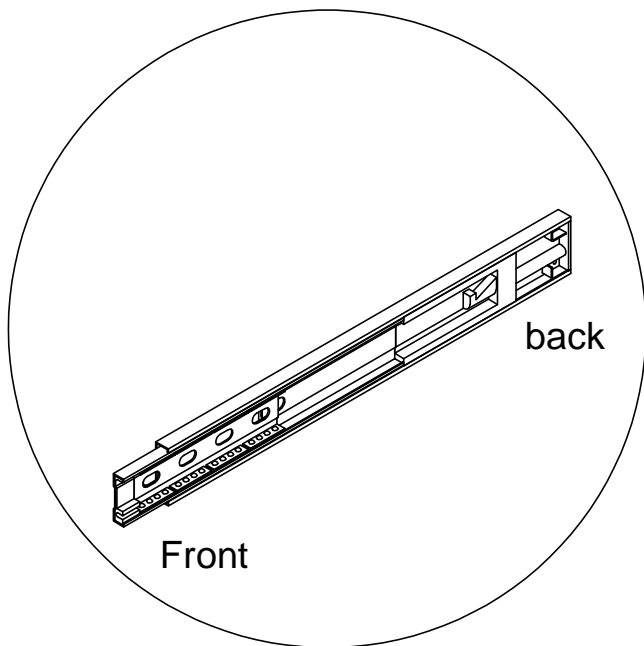
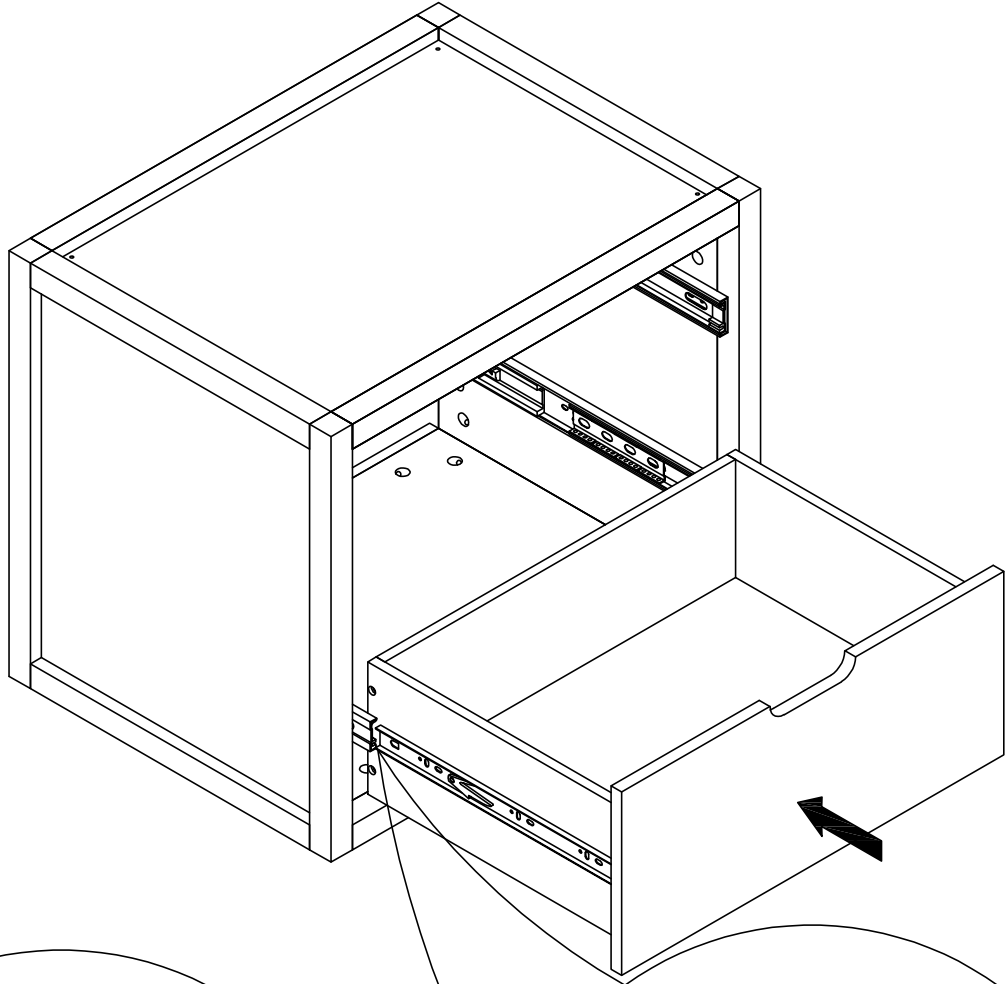


STEP 7



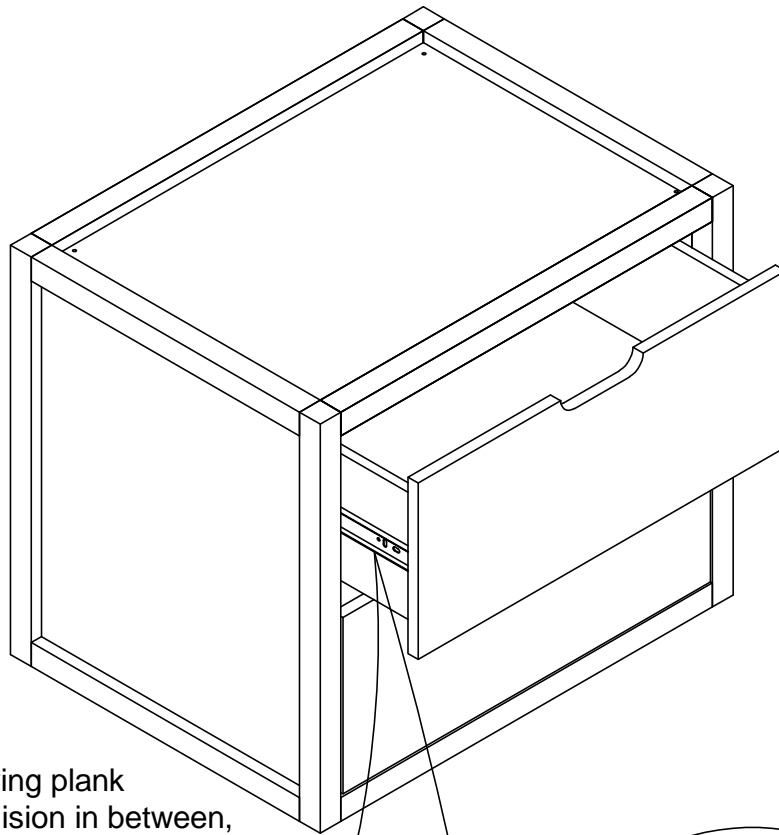
Small drawer module Lia

STEP 8

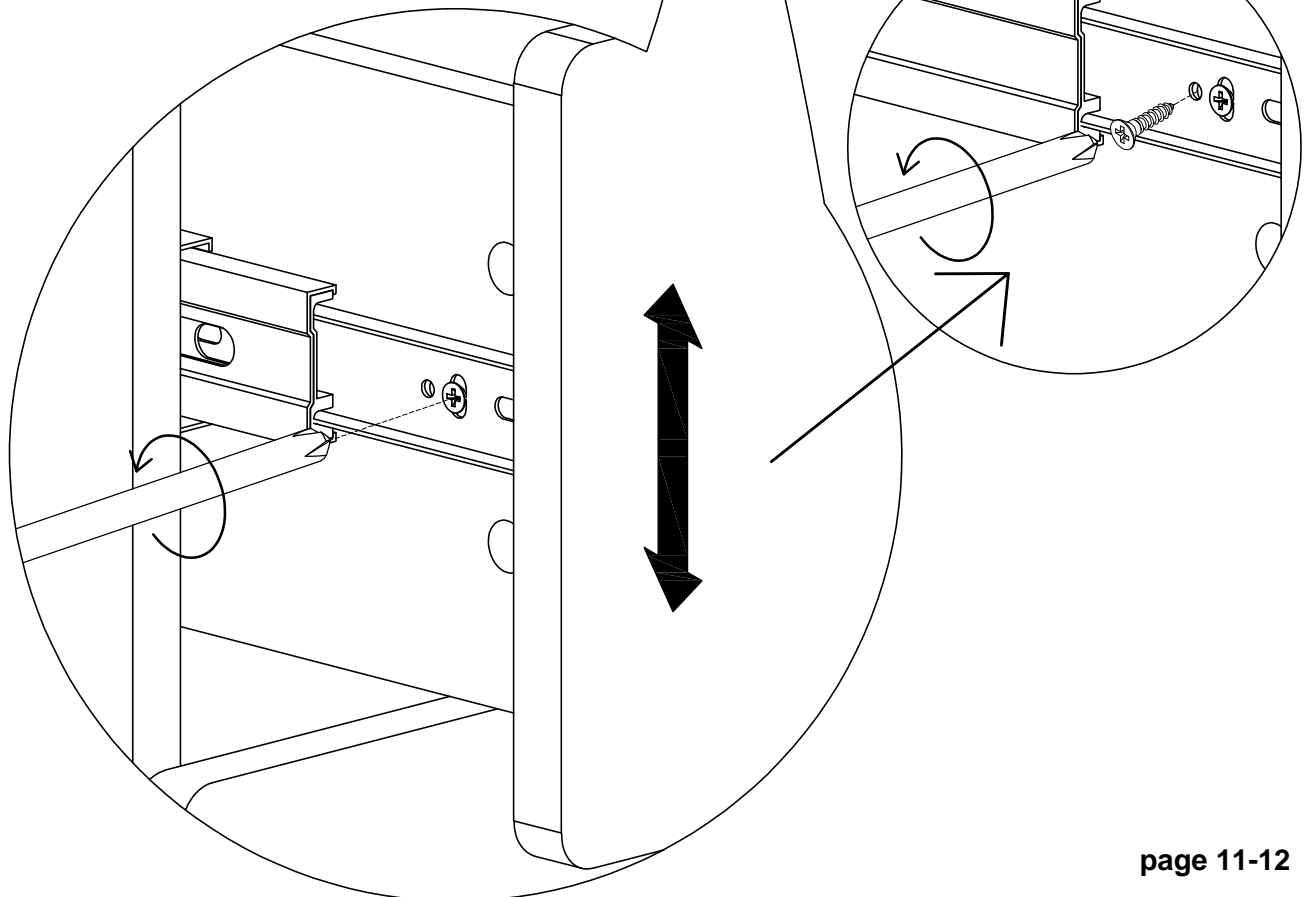


Small drawer module Lia

STEP 9



If the gap between the drawing plank is too small or there is a collision in between, please loosen the screw and adjust the drawer plank up or down:



Small drawer module Lia

STEP 10

