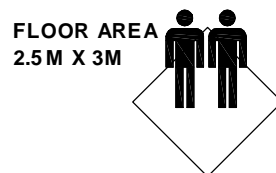
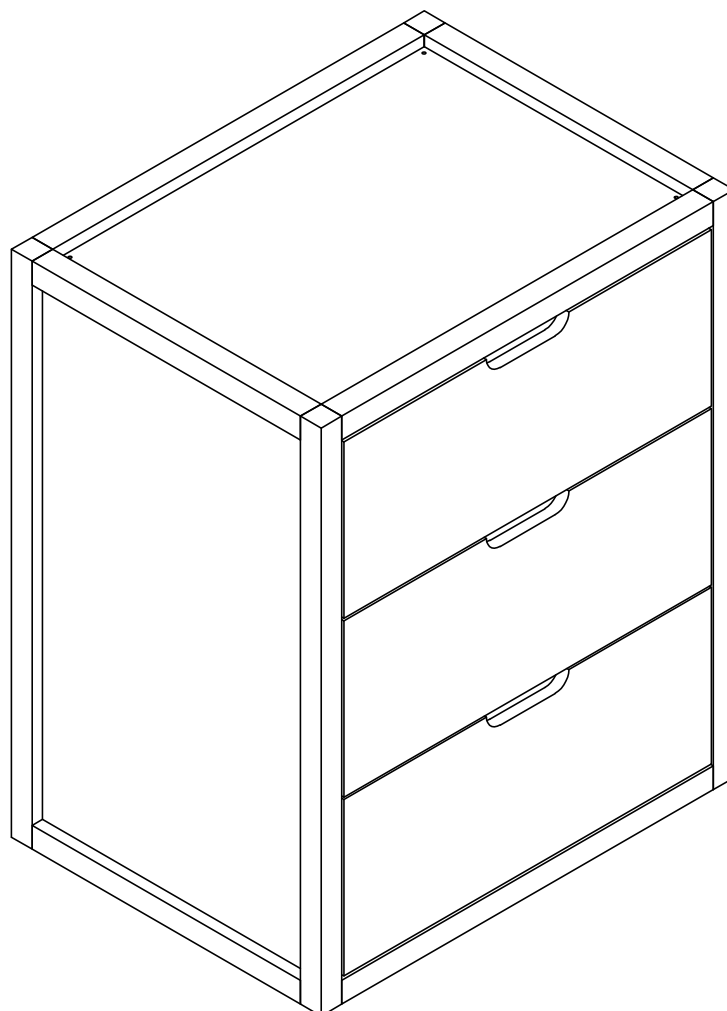
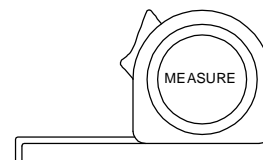
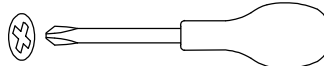
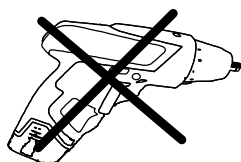


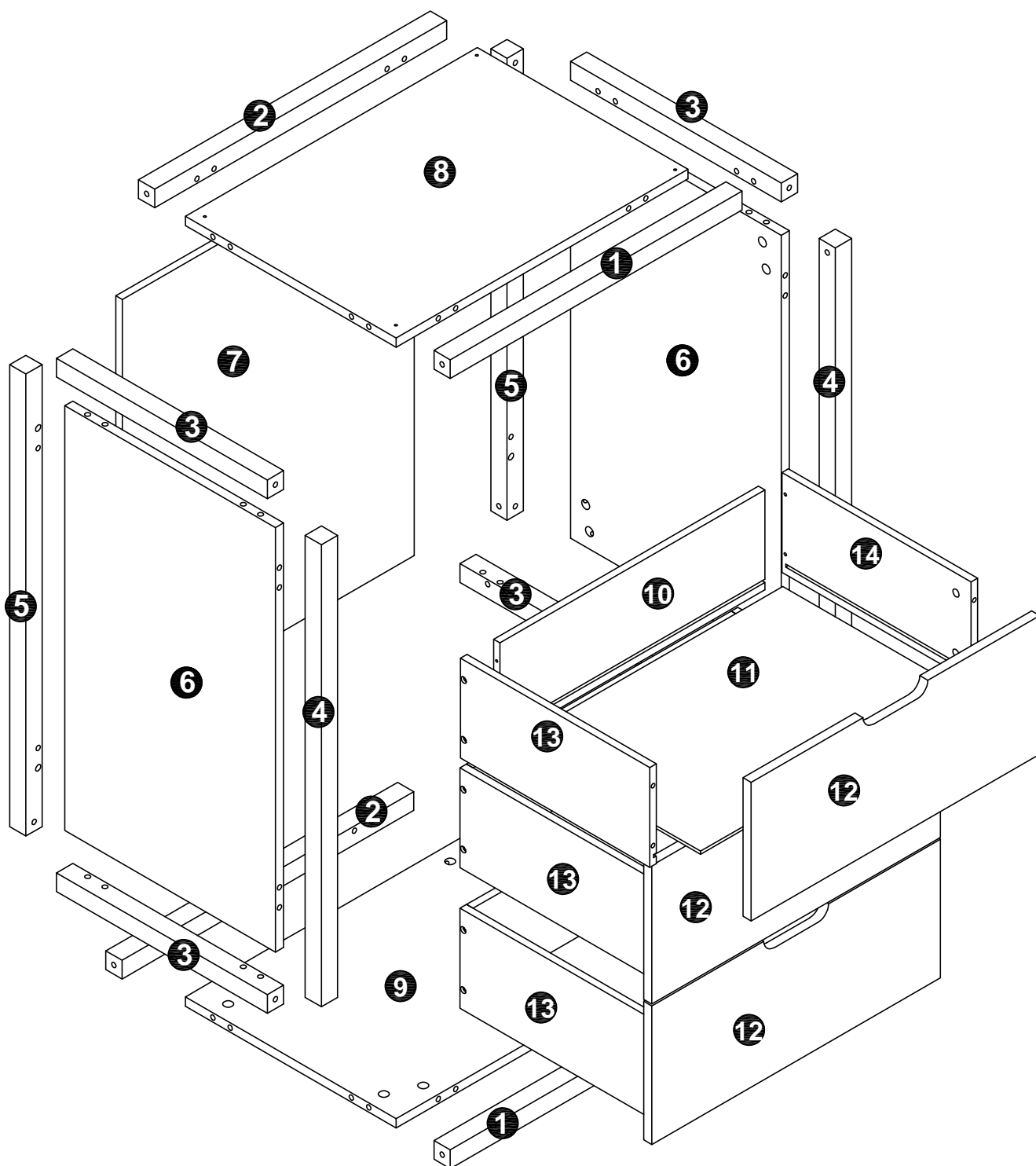
# Big drawer module Lia



**REQUIRED ASSEMBLY TOOLS**



# Big drawer module Lia




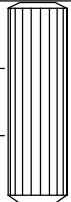


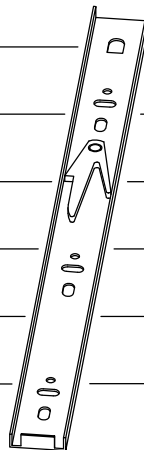
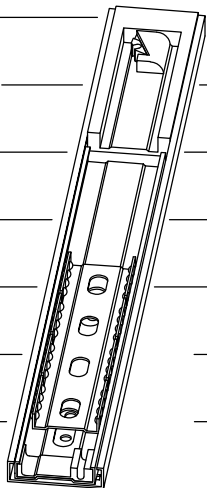
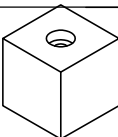

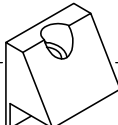



# Big drawer module Lia

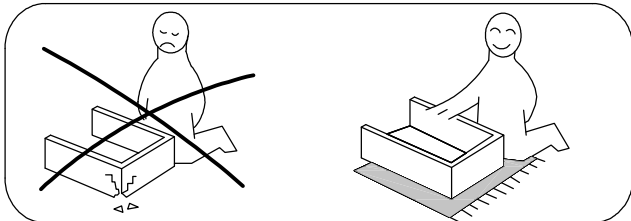
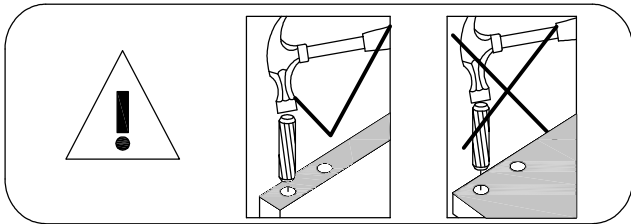
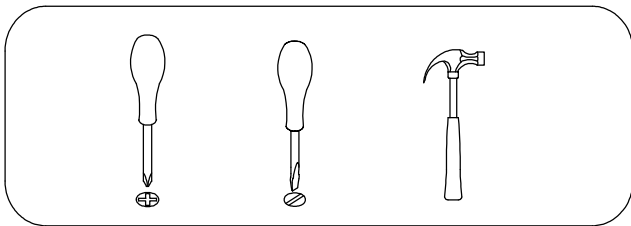
<b>NO.</b>	<b>PARTS LIST</b>	<b>QTY</b>	<b>NO.</b>	<b>PARTS LIST</b>	<b>QTY</b>
①	front frame	2	⑧	face panel	1
②	back frame	2	⑨	bottom panel	1
③	side frame	4	⑩	drawer back panel	3
④	front support frame	2	⑪	drawer bottom panel	3
⑤	back support frame	2	⑫	drawer face panel	3
⑥	side panel	2	⑬	drawer left panel	3
⑦	back panel	1	⑭	drawer right panel	3

# Big drawer module Lia

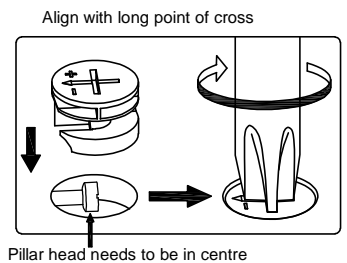
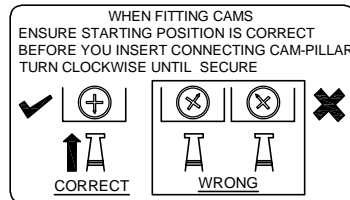
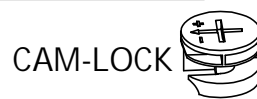
## HARDWARE LIST

								9cm
								8cm
								7cm
								6cm
								5cm
								4cm
								3cm
								2cm
								1cm
								0cm
								
12x Ø12X10	32x Ø15X10	44x M6X35	48x Ø8X30mm	30x M3.5X12mm	12x M3.5X30mm	6x 14"	6x 14"	
A	B	C	D	E	F	G	H	
								5cm
								4cm
								3cm
								2cm
								1cm
								0cm
								
4x 28X28X28mm	4x M8X30mm	4x	4x M3.5X20mm					
I	J	K	L					

# Big drawer module Lia

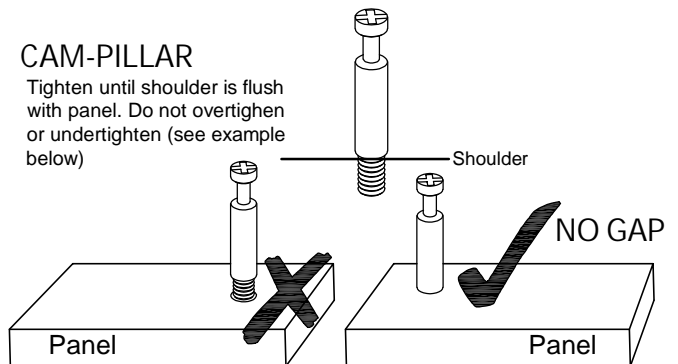


## TIPS FOR FITTING CAM-LOCKS AND CAM-PILLARS



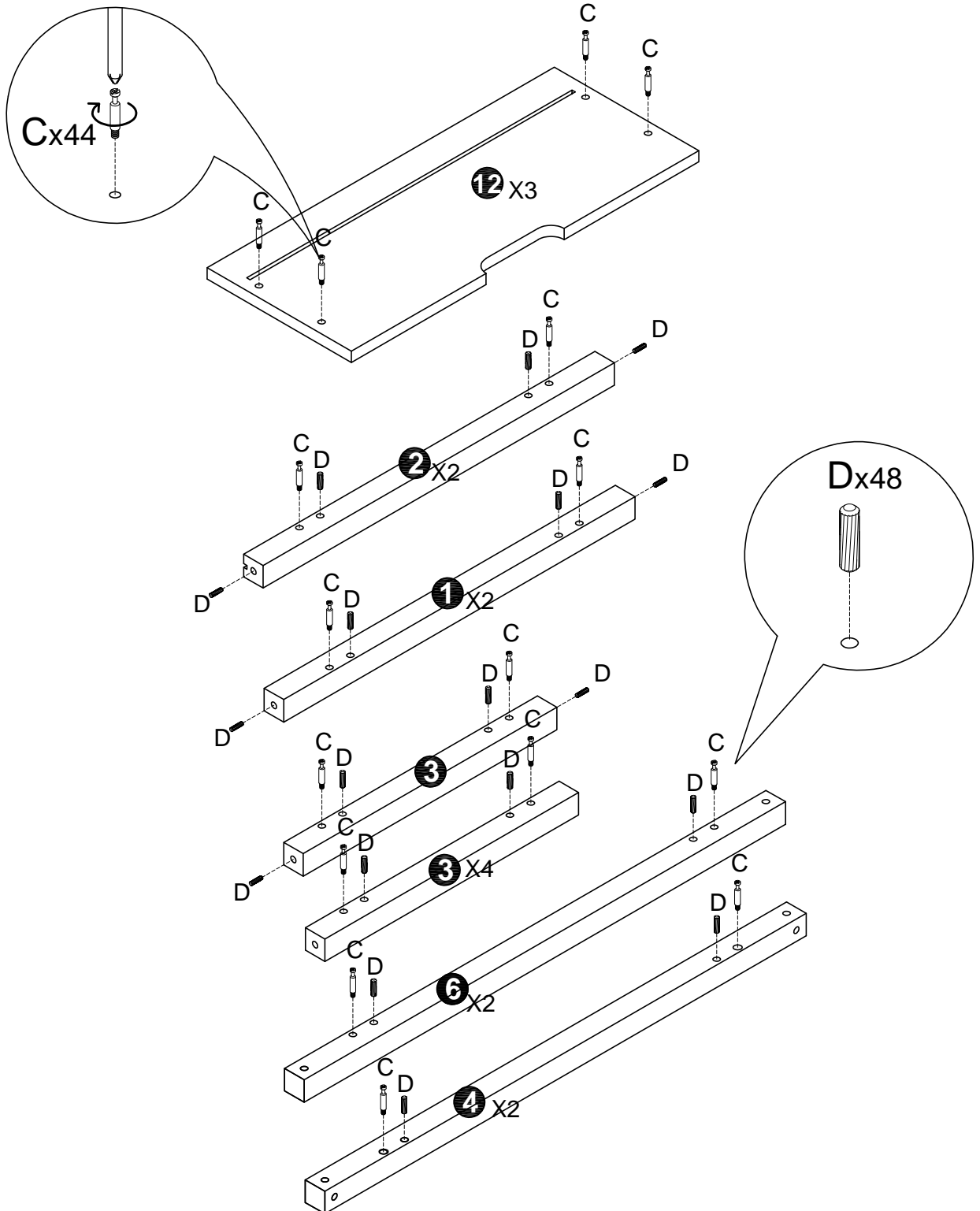
## CAM-PILLAR

Tighten until shoulder is flush with panel. Do not overtighten or undertighten (see example below)



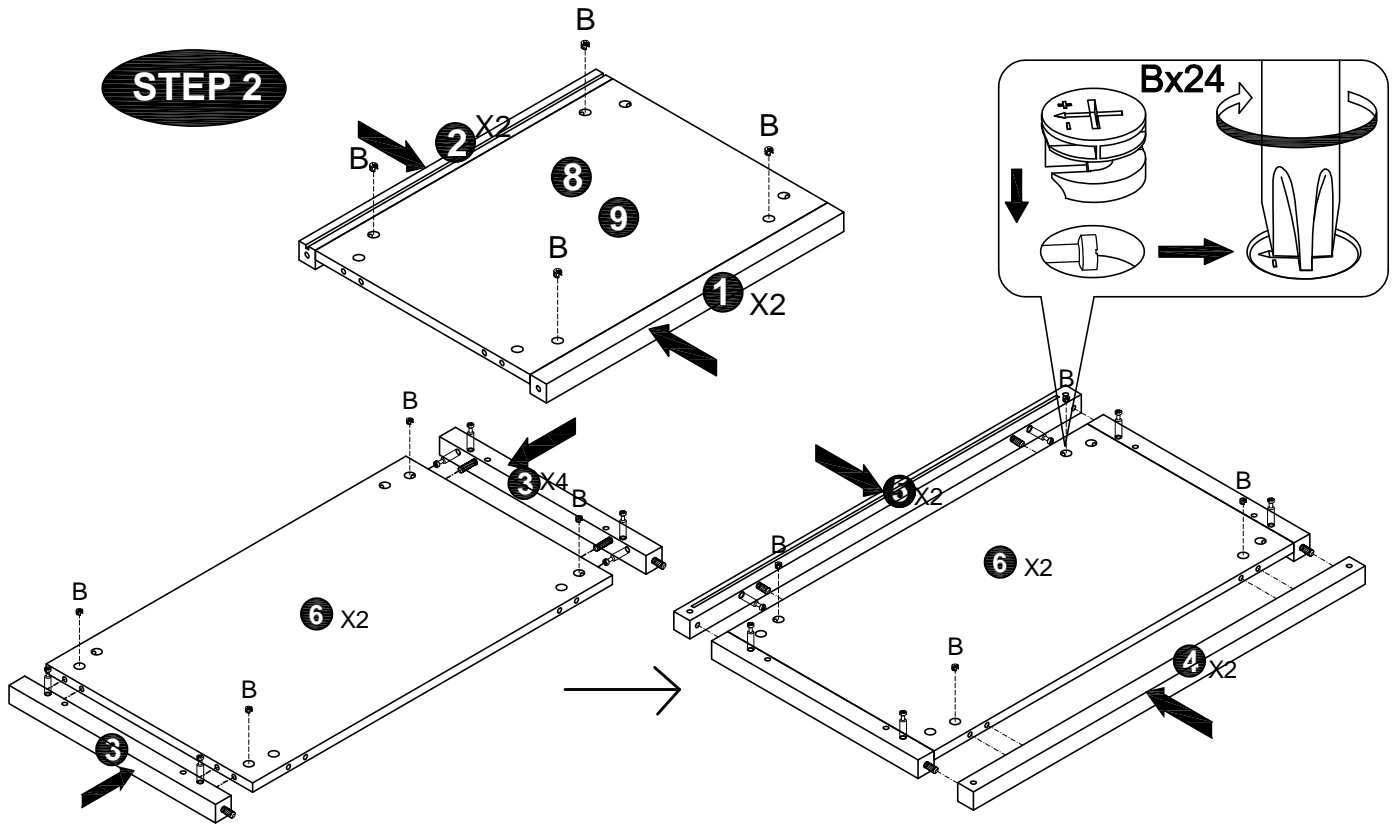
# Big drawer module Lia

## STEP 1

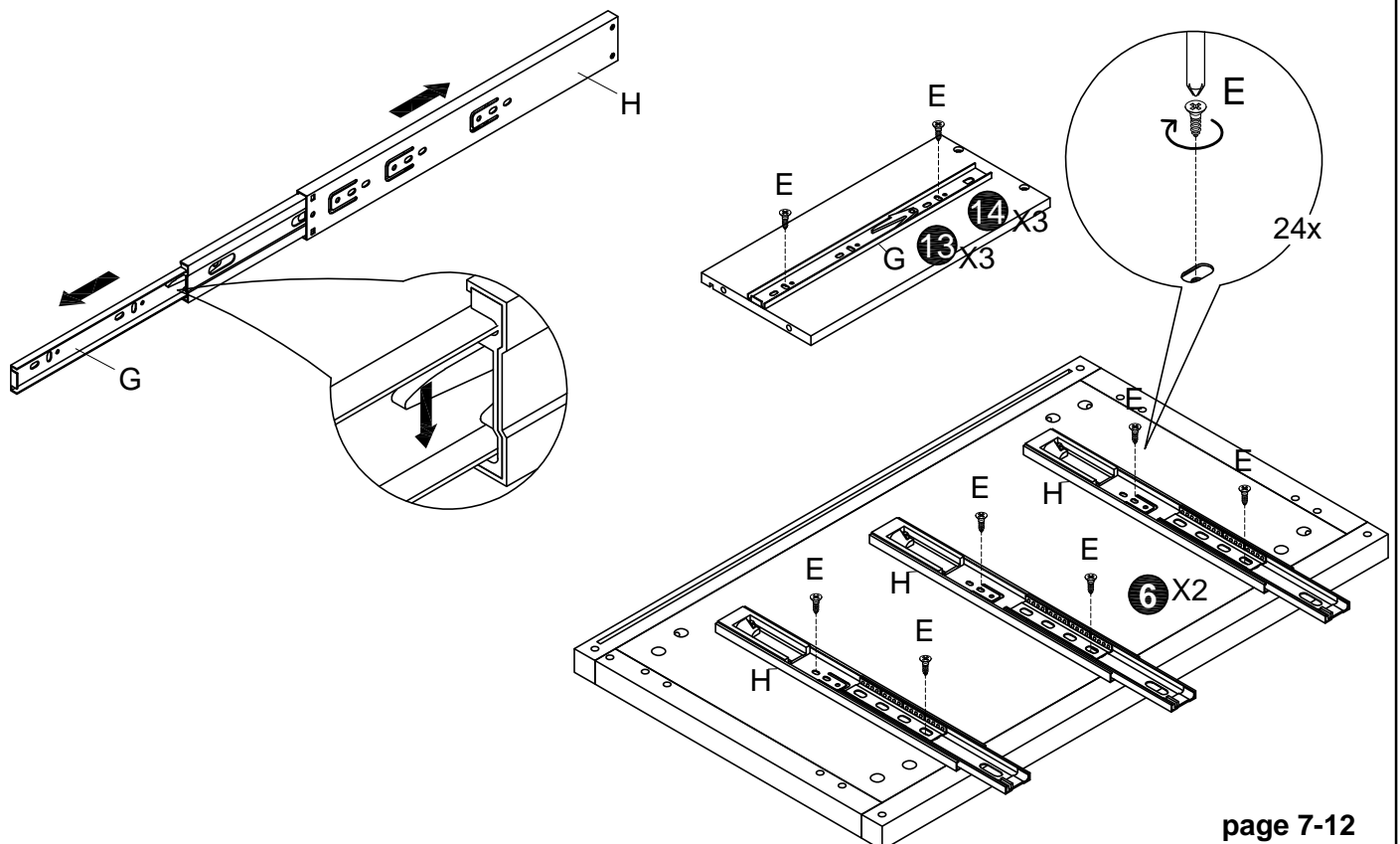


# Big drawer module Lia

## STEP 2

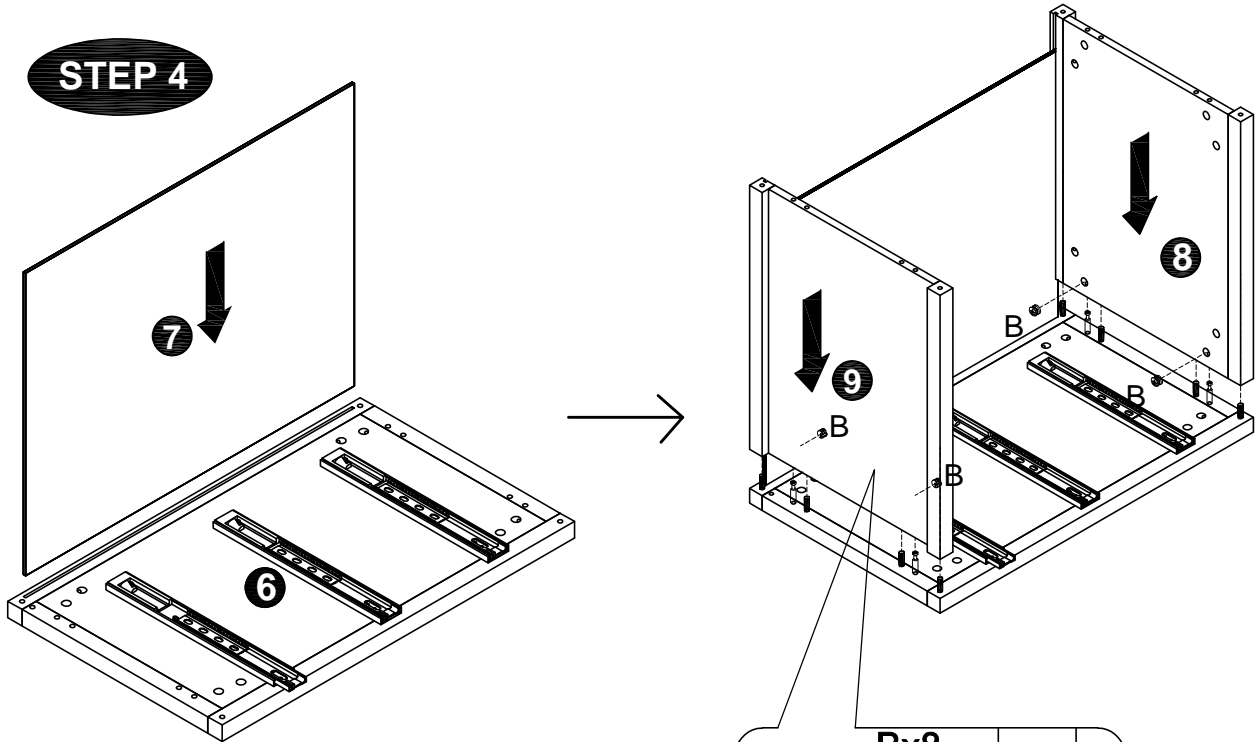


## STEP 3

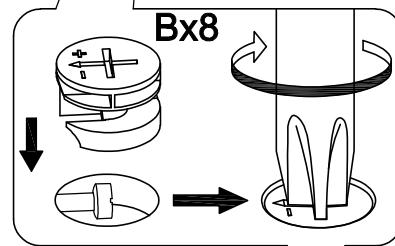
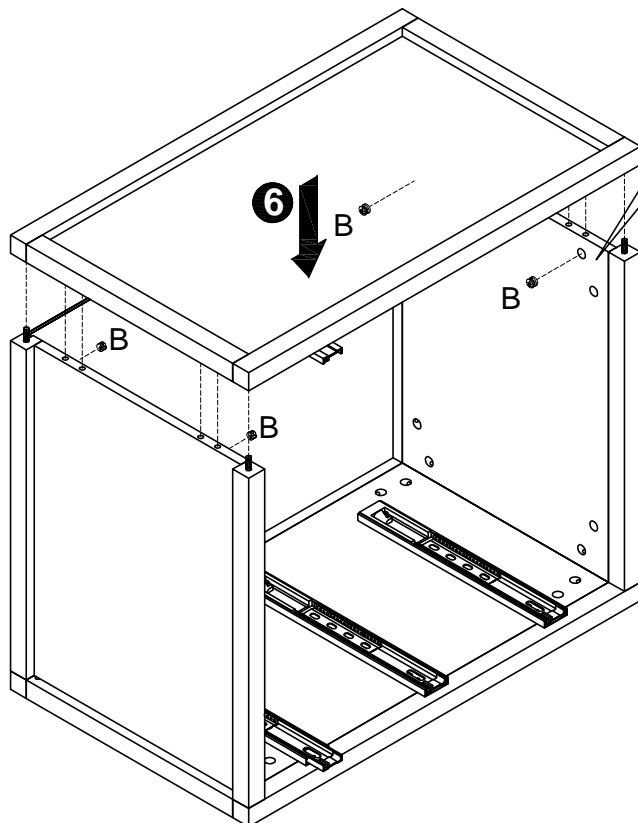


# Big drawer module Lia

**STEP 4**



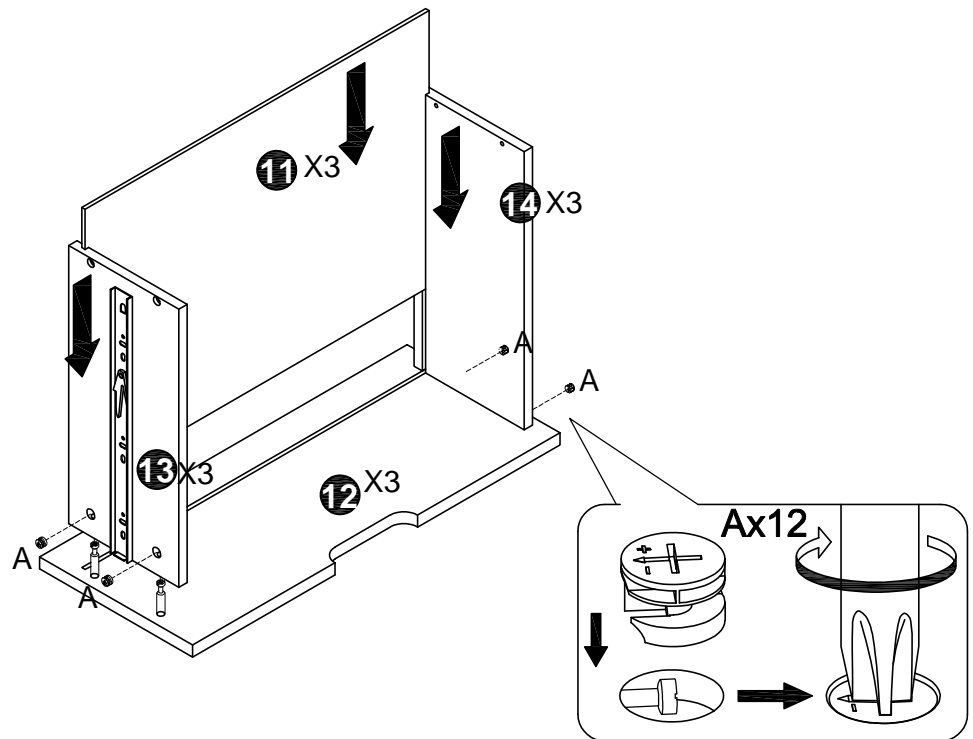
**STEP 5**



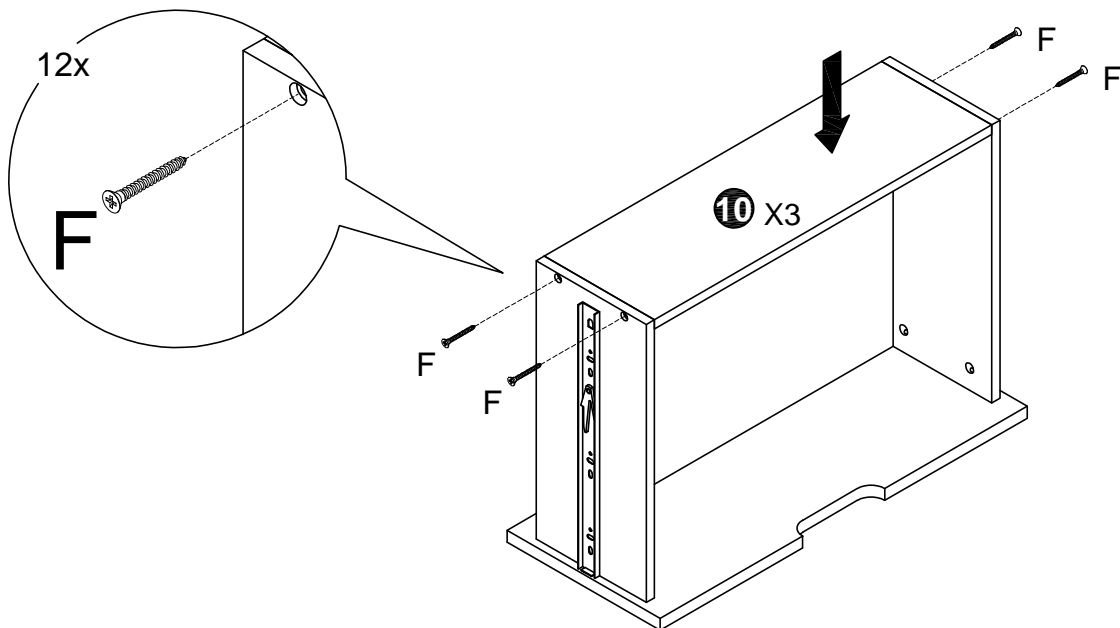


# Big drawer module Lia

## STEP 6

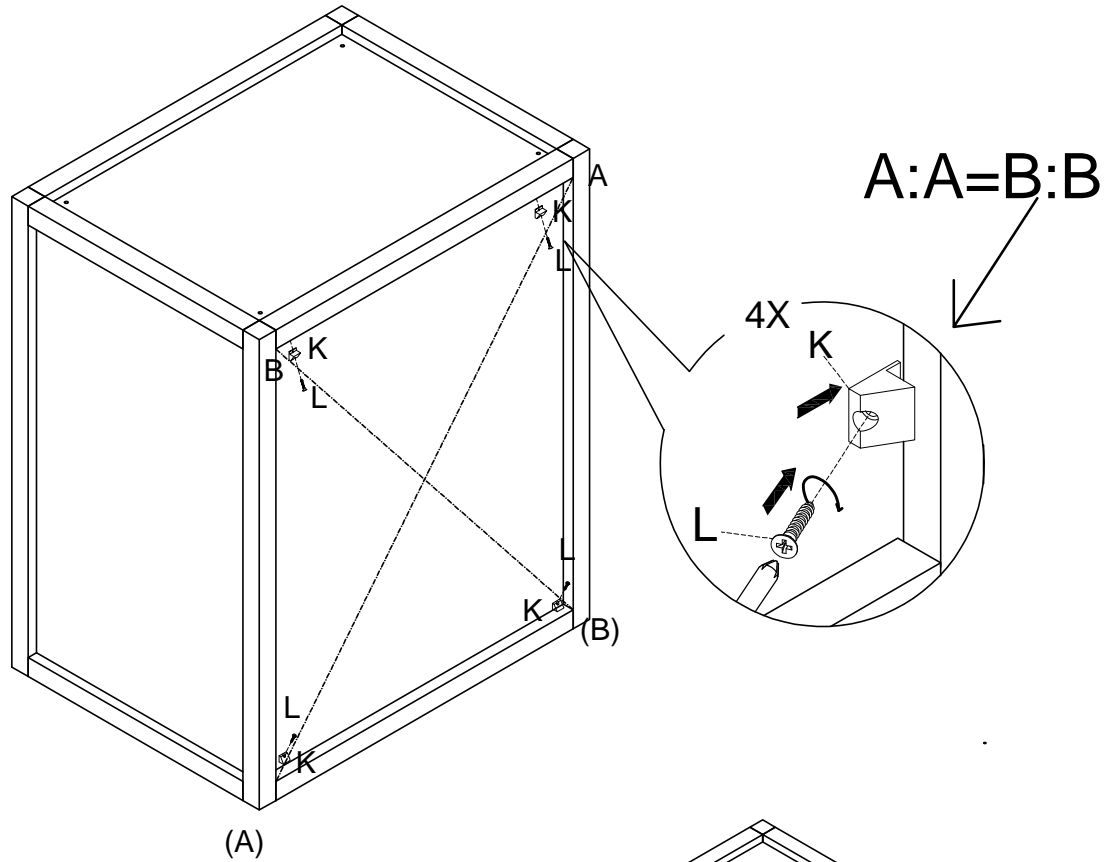


## STEP 7

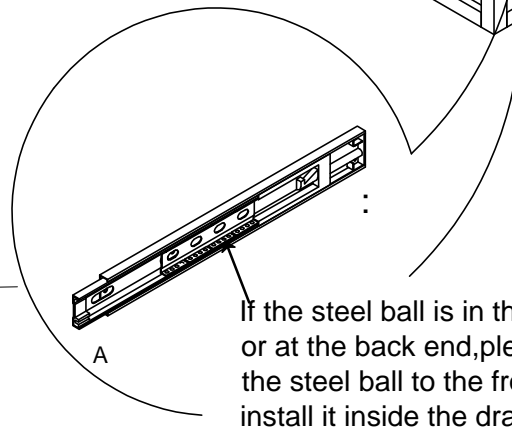
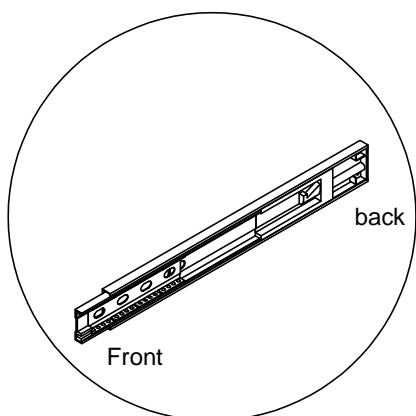
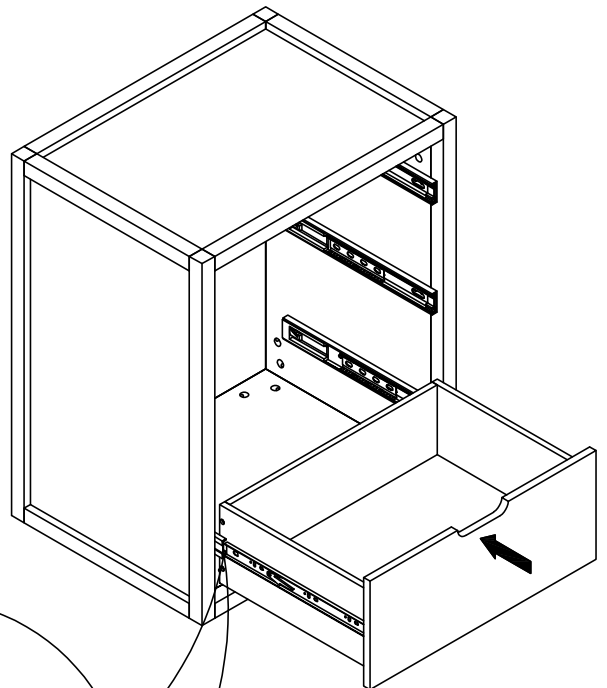


# Big drawer module Lia

**STEP 8**



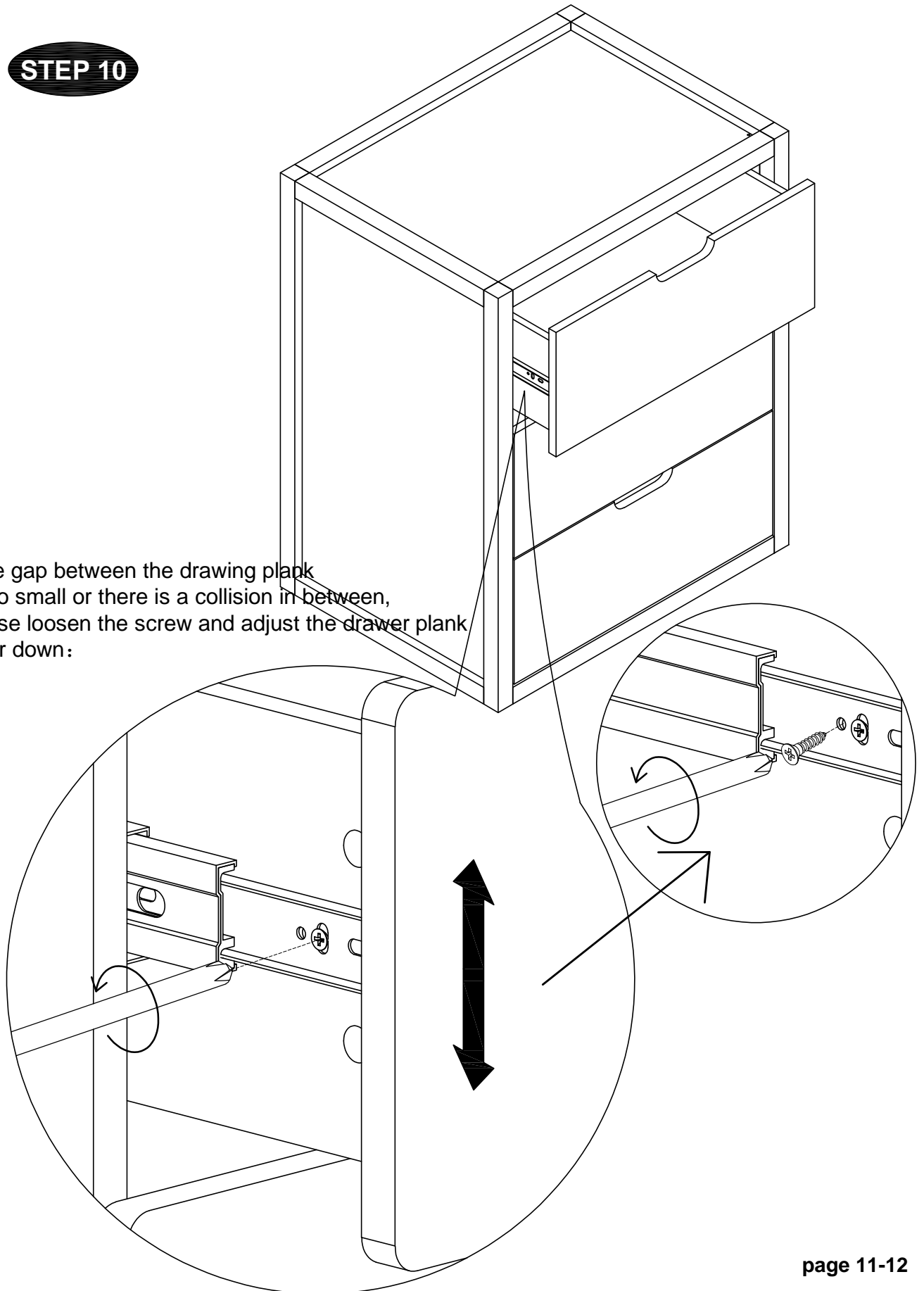
**STEP 9**



# Big drawer module Lia

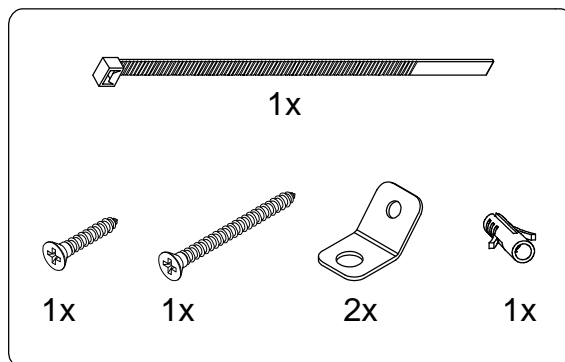
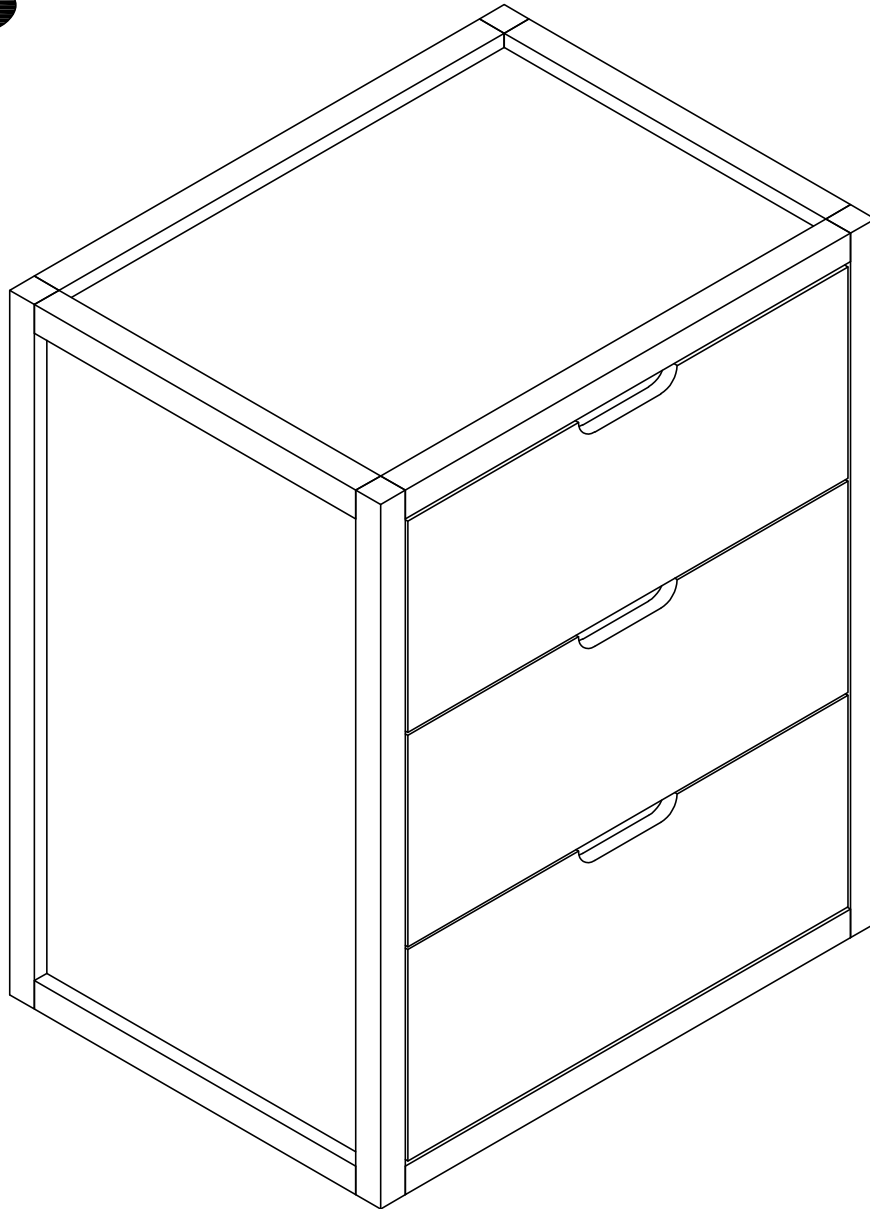
## STEP 10

If the gap between the drawing plank is too small or there is a collision in between, please loosen the screw and adjust the drawer plank up or down:



# Big drawer module Lia

**STEP 11**



Safety tip: Please attach the chest to the wall using the hardware provided.